

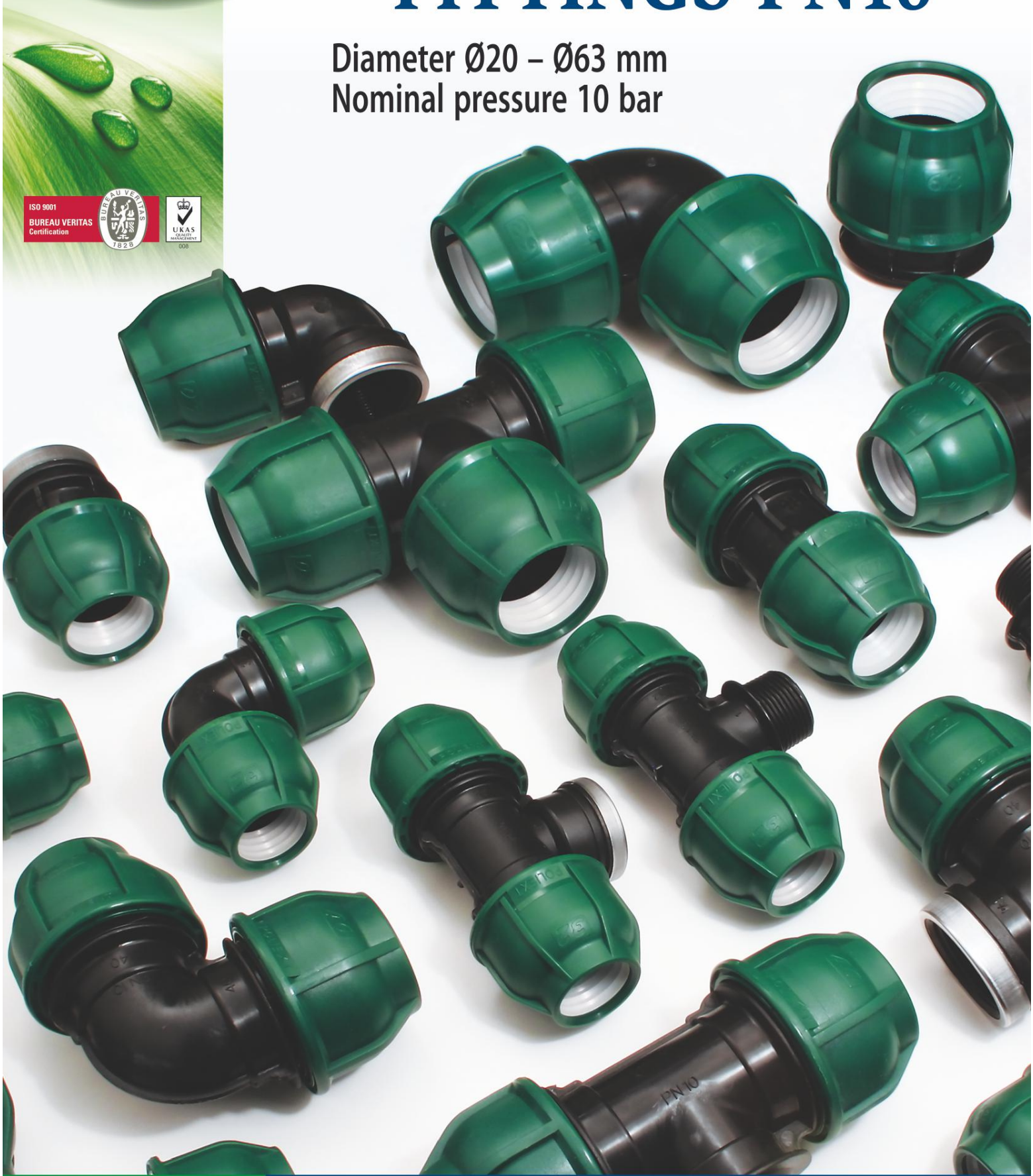


# PP COMPRESSION FITTINGS PN10

Diameter Ø20 – Ø63 mm  
Nominal pressure 10 bar

ISO 9001

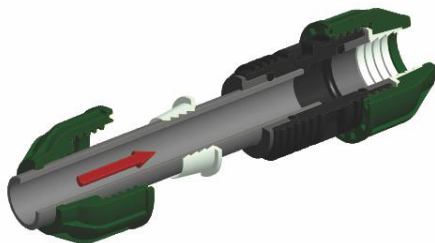
BUREAU VERITAS  
Certification



**Poliext Csövek Kft.** PP Compression fittings PN10 are designed specifically for connecting polyethylene (PE) pipes, outside diameter 20 up to 63 mm. They are compatible with all pipes complying with EN 12201. Maximal nominal pressure is 10 bar.

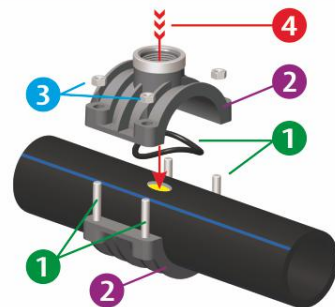


PP Coupling PN10 assembling



1. Sharp the edge of the pipe.
2. Place the nut and the clinching ring on the pipe.
3. Push the pipe firmly into the body.
4. Pull back the nut and clinching ring and completely coil it up to the fitting.

Clamp saddle assembling



1. Place the O-ring and screws.
2. Place the clamp saddle onto the pipe.
3. Coil firmly the female screws.
4. Drill the pipe throughout the threaded part of the clamp saddle.



**Poliext Csövek Kft.**  
 6000 Kecskemét-Matkó II. ker. 232, Hungary  
 Tel.: +36 76 415 770 | Fax: +36 76 502 709  
 Email: poliext@poliext.hu | Web: www.poliext.com

